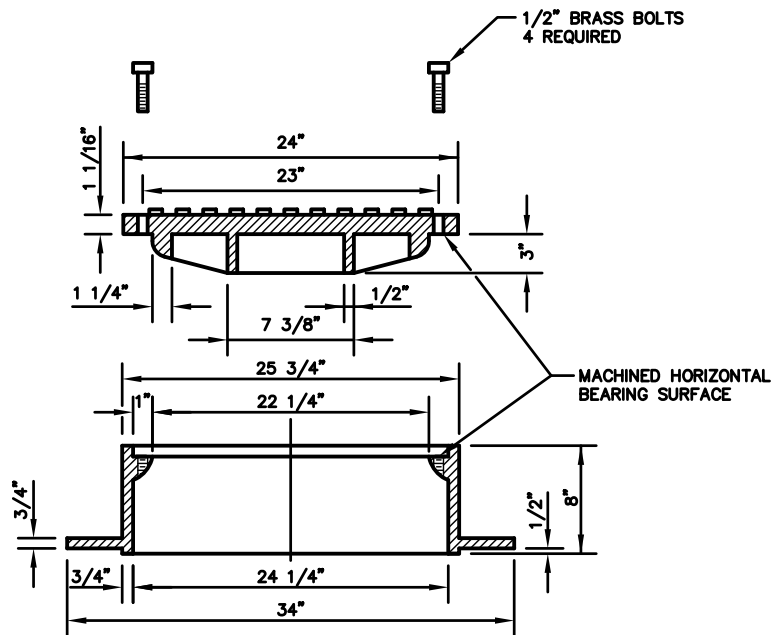


**PLAN**



**SECTION A-A**

**NOTE:**

1. CASTING SPECIFICATIONS: ASTM A-48 WITH A MINIMUM TENSILE STRENGTH OF 25 KSI (CLASS 25) PER CITY OF CENTENNIAL STANDARDS
2. ALL CASTINGS TO BE DIPPED IN ASPHALTBASE PAINT (OR APPROVED EQUAL)
3. TOP OF MANHOLE COVER SHALL BE 1/4" TO 1/2" BELOW GRADE OR PER CITY/COUNTY REQUIREMENTS
4. CASTINGS SHALL BE AS SPECIFIED BELOW OR EQUAL: (CAST IRON ONLY)  

MANUFACTURERS	CAT. #
J MARK CORP.	C-1161
5. COVER SHALL HAVE SELF CENTERING BOLT HOLES.

**Kennedy/Jenks Consultants**

Engineers & Scientists

165 S Union Boulevard  
 Suite 570  
 Lakewood, CO 80226  
 303 985 9636 TEL

SOUTH ENGLEWOOD SANITATION DISTRICT  
[www.southenglewood.org](http://www.southenglewood.org)

24" RING & BOLT  
 DOWN COVER  
 DETAIL